

What's Inkscape ?

Inkscape is an open source SVG editor with capabilities similar to Illustrator, CorelDraw, Visio, etc. Supported SVG features include basic shapes, paths, text, alpha blending, transforms, gradients, node editing, svg-to-png export, grouping, and more....

Why is Inkscape Important?

►A production ready vector-software does not exist for free and open source software.

►For artists and graphics designers, no other application has a core goal of complete W3C.org standard SVG and DOM compliancy. This assures files are interchangeable among other applications with a minimum of fuss.

►For engineers, scientists and other technical users, Inkscape's support for SVG means a user friendly tool for diagrams, charts, maps and other technical drawings.

Who's Inkscape ?

The Inkscape Community is a grass-roots collection of artists, writers, users and developers bent on creating a powerful vector drawing tool that is a pleasure to use and aim to be the most standards compliant.

Throughout the application, there are helpful tool tips and meaningful messages in the status bar. Almost every function and tool can be controlled either through keyboard shortcuts or the mouse.

Platforms :

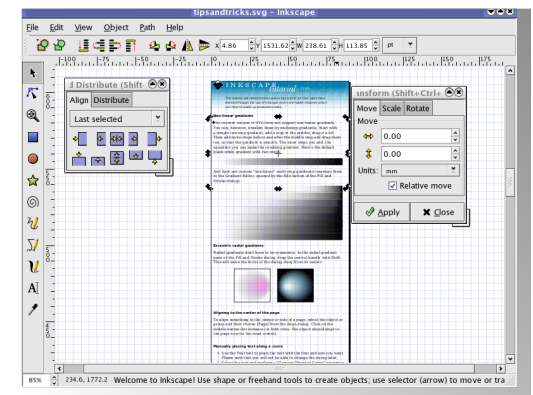
- Linux
- MacOSX via fink
- Windows

To learn more and download the software:

www.inkscape.org



SVG Drawing for the Future



Inkscape - SVG Drawing for the Future

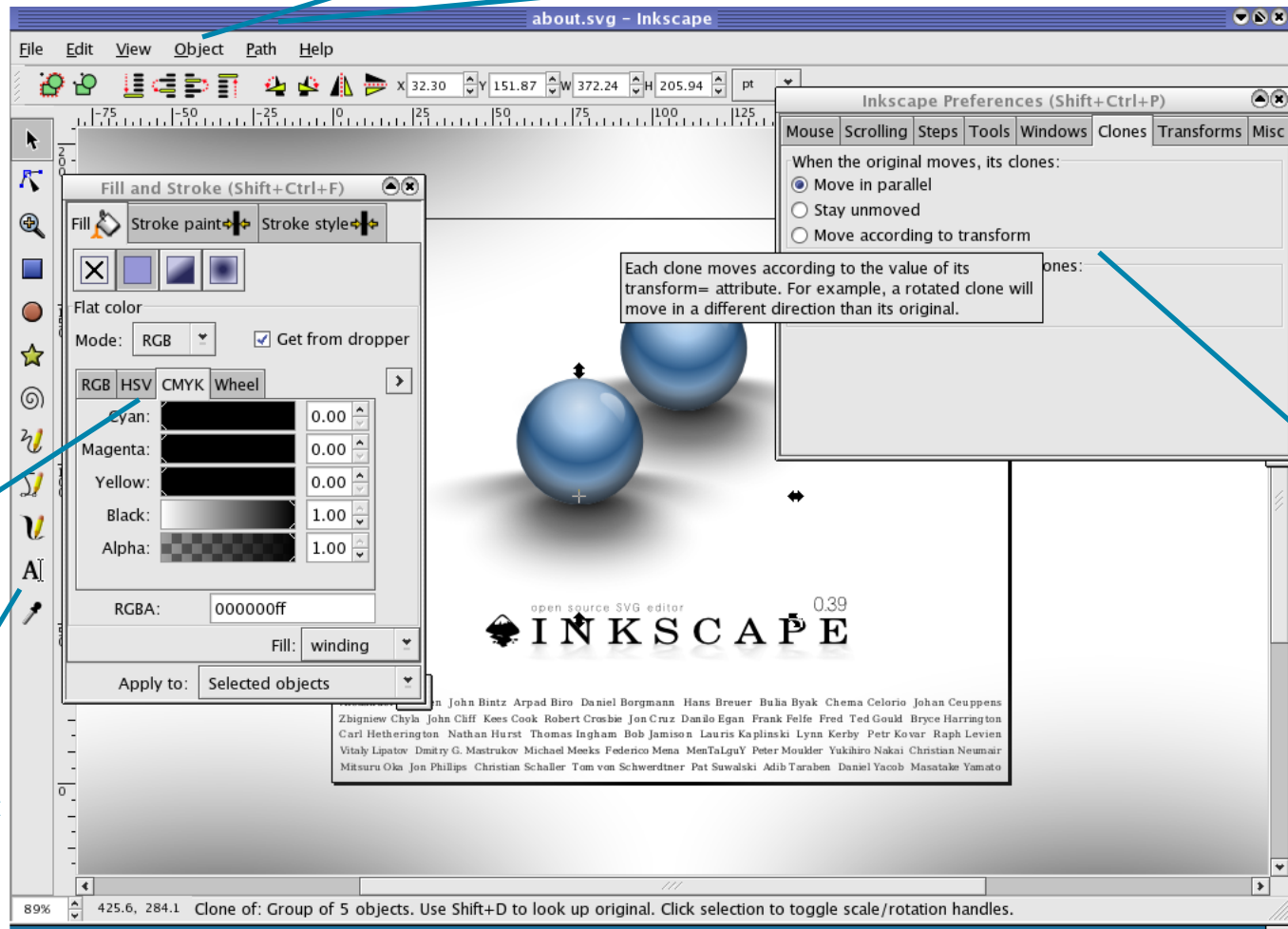
► Extensive Keyboard Short Cuts

► Built-in XML Editor for Direct Access to the Underlying SVG DOM

► Full Support for Boolean Operations

► User Friendly Dialogs

► Unicode Support including Vertical Text



► **Clones** - A completely new way to create and edit duplicate objects. Not only does this ease creation of duplicate objects, it allows them to be moved or edited, based on the original object.

Inkscape has a finely grained, high performance anti-aliased rendering display with precision controls for zooming and moving of objects.